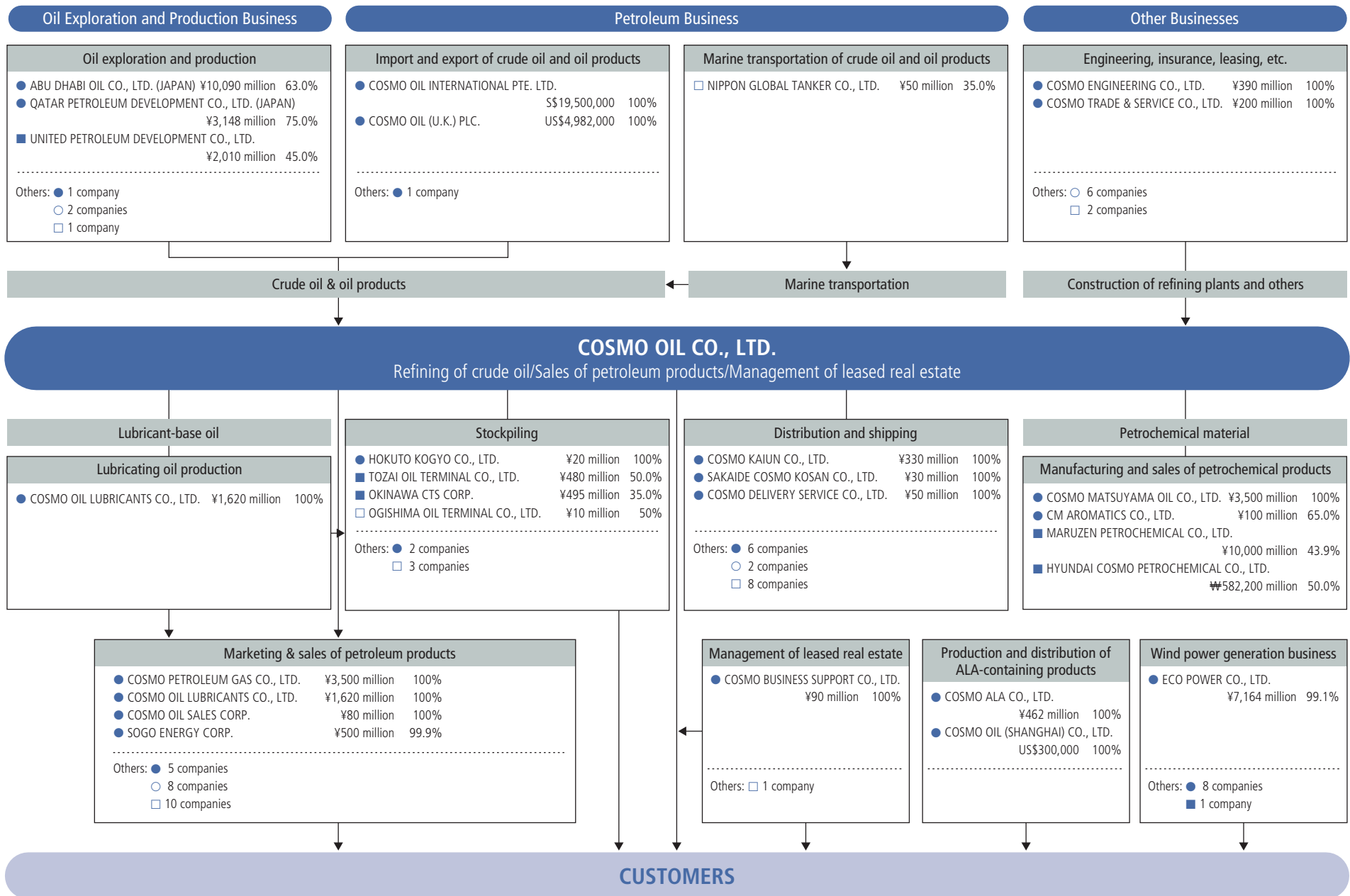


Group Information (As of March 31, 2013)

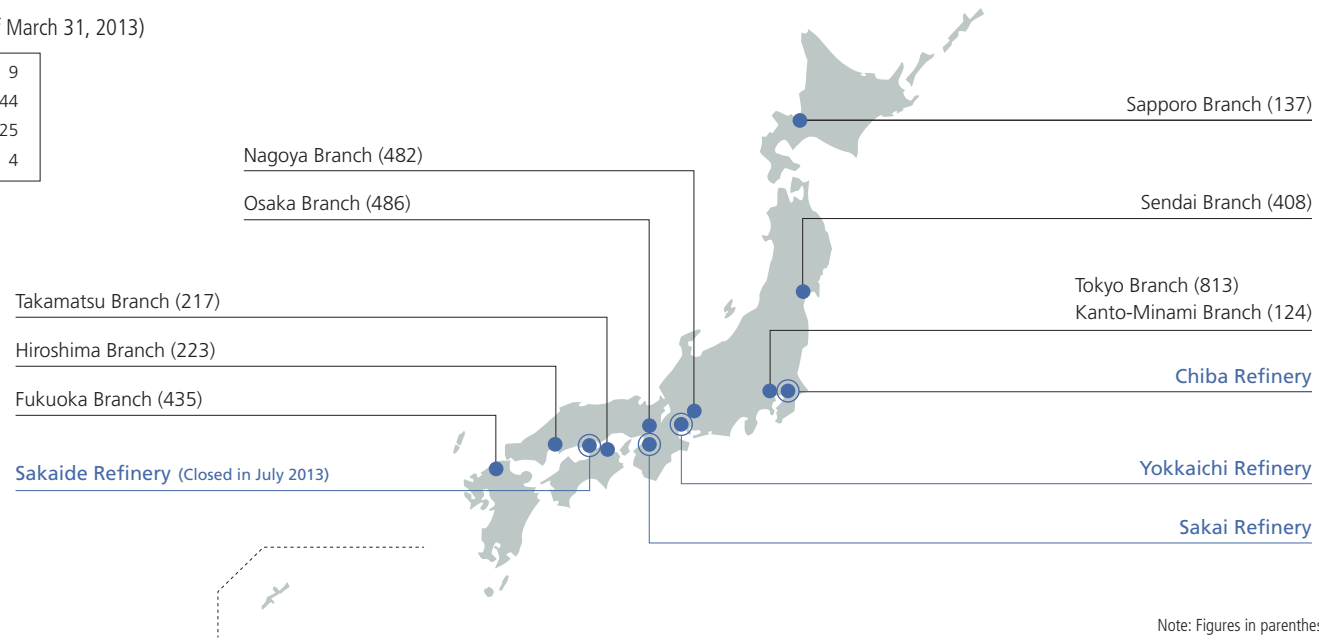


● Consolidated subsidiaries
■ Affiliated companies accounted for under the equity method
○ Unaffiliated companies accounted for under the equity method
□ Affiliated companies not accounted for under the equity method

Lower line: Amount of money = Capital % = Percentage of voting rights

Branches and Refineries (As of March 31, 2013)

Branches	9
SS Operators	244
Service Stations (SS)	3,325
Refineries	4



Note: Figures in parentheses show the number of service stations.

Principal Overseas Bases (As of March 31, 2013)



Overseas Offices	4
Overseas Subsidiaries	4