

DATA BOOK 2002

For the year ended March 31,2002

COSMO OIL CO.,LTD.

CONTENTS

1. Sales Volume	...p. 1	7. Financial Statements	...p. 7
2. Cost		8. Stock Information	
Crude Oil Prices	...p. 2	9. Statement of Cash Flows	...p.8
Currency Exchange Rates			
Volume of Crude Oil Processed	..p. 3	<u>Nonconsolidated Information</u>	
Topper Capacity Utilization Rate		10. Income Statements	...p.10
Yields of Four Middle Distillates		11. Profitability	...p.11
<u>Consolidated Information</u>		12. Capital Expenditures	...p.12
3. Income Statements	...p. 4	13. Balance Sheets	...p.13
4. Profitability	...p. 5	14- .Financial Statements	...p.14
5. Capital Expenditures		14- .Financial Statements	...p.15
6. Balance Sheets	...p. 6	15. Stock Information	...p.16
		16. Productivity	...p.17

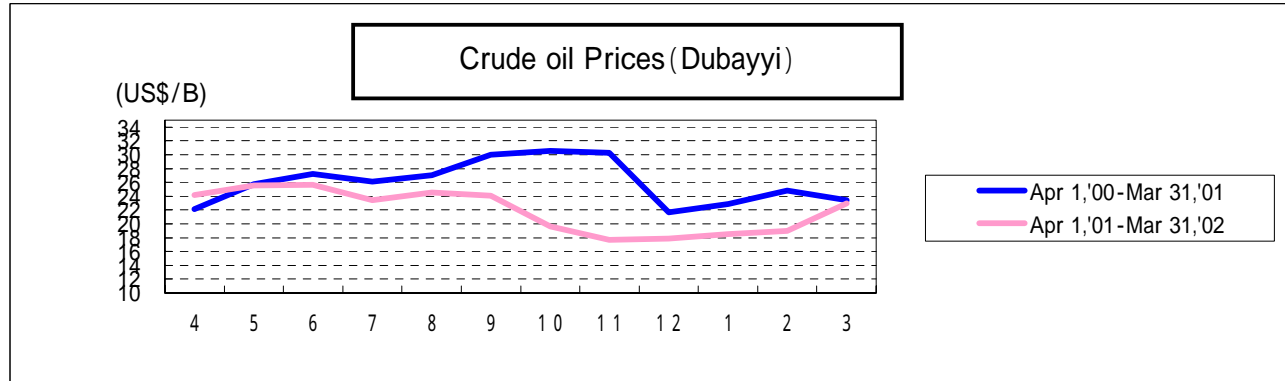
1.COSMO OIL's Sales Volume (Domestic)

(Thousand KL)

	97			98			99			2000			2001		
	Volume	Structure	Rate of growth	Volume	Structure	Rate of growth	Volume	Structure	Rate of growth	Volume	Structure	Rate of growth	Volume	Structure	Rate of growth
Gasoline	6,309	19.6%	101.6%	6,381	20.4%	101.1%	6,451	20.6%	101.1%	6,604	21.6%	102.4%	6,664	22.5%	100.9%
Naphtha	7,694	23.9%	109.6%	7,152	22.9%	93.0%	7,255	23.2%	101.4%	6,661	21.8%	91.8%	6,813	23.0%	102.3%
Jet fuel	452	1.4%	106.1%	522	1.7%	115.5%	418	1.3%	80.1%	449	1.5%	107.4%	410	1.4%	91.2%
Kerosene	3,860	12.0%	93.2%	3,749	12.0%	97.1%	3,885	12.4%	103.6%	4,009	13.1%	103.2%	3,658	12.4%	91.3%
Diesel fuel	5,970	18.5%	96.0%	5,588	17.9%	93.6%	5,342	17.1%	95.6%	5,227	17.1%	97.8%	5,091	17.2%	97.4%
Heavy fuel oil A	3,438	10.7%	94.5%	3,406	10.9%	99.1%	3,526	11.3%	103.5%	3,567	11.7%	101.2%	3,428	11.6%	96.1%
Heavy fuel oil C	4,511	14.0%	96.2%	4,428	14.2%	98.2%	4,425	14.1%	99.9%	4,015	13.1%	90.7%	3,519	11.9%	87.6%
Total	32,235	100.0%	99.7%	31,226	100.0%	96.9%	31,302	100.0%	100.2%	30,533	100.0%	97.5%	29,582	100.0%	96.9%

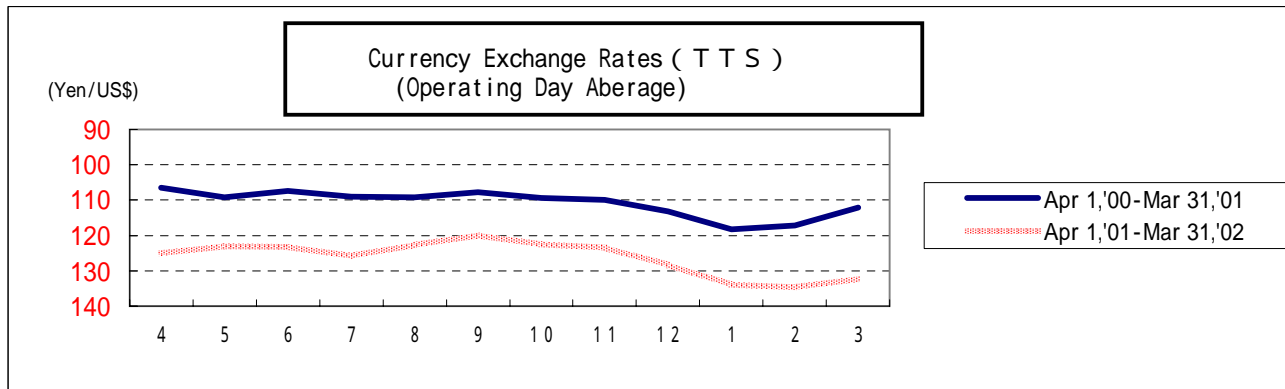
2 . COST

Crude Oil Prices,Currency Exchange Rates



Crude oil Prices (Dubayyi) Monthly Average (U S \$ / B)

	4	5	6	7	8	9	4-9	10	11	12	1	2	3	10-3	Year
Apr 1, '00-Mar 31, '01	22.11	25.75	27.24	26.08	27.00	29.97	26.44	30.52	30.31	21.65	22.85	24.80	23.45	25.67	26.05
Apr 1, '01-Mar 31, '02	24.18	25.60	25.65	23.43	24.53	24.12	24.59	19.63	17.67	17.83	18.48	19.02	22.96	19.24	21.92



Currency Exchange Rates (T T S) Operating Day Average (Yen/\$)

	4	5	6	7	8	9	4-9	10	11	12	1	2	3	10-3	Year
Apr 1, '00-Mar 31, '01	106.54	109.20	107.34	108.94	109.21	107.81	108.19	109.39	109.95	113.23	118.19	117.17	122.07	114.95	111.51
Apr 1, '01-Mar 31, '02	124.94	122.97	123.21	125.60	122.67	119.88	123.24	122.34	123.31	128.16	133.83	134.48	132.24	128.83	125.98

Volume of Crude Oil Processed / Topper Capacity Utilization Rate / Yields of Four Middle Distillates

	96	97	98	99	2000	2001
Volume of Crude Oil Processed (Thousand KL)	28,817	29,453	28,662	27,363	28,014	27,251
Topper Capacity Utilization Rate (%) CD basis	76.8	78.7	76.6	72.9	74.8	78.9
Yields of Four Middle Distillates (%)	49.1	49.2	47.7	48.3	47.4	48.0

Volume of Crude Oil Processed : Data is on Cosmo Oil's Refinery Basis

Consolidated Information

3.Income Statements(Consolidated)

(Million Yen)

	96	97	98	99	2000	2001
Net Sales	1,729,494	1,680,478	1,443,456	1,584,678	1,845,841	1,813,838
Cost of sales	1,508,186	1,473,349	1,265,442	1,427,640	1,664,757	1,659,438
Gross Profit	221,308	207,129	178,014	157,038	181,084	154,399
SG&A expenses	186,547	180,009	155,154	140,372	144,502	132,343
Operating income	34,761	27,119	22,860	16,665	36,582	22,056
Interest & dividend income	2,343	2,078	2,176	2,170	3,445	3,192
Interest expense	21,380	19,714	18,487	18,991	18,691	14,219
Equity in earnings or loss of investees	-	-	-1,406	-1,798	555	268
Other	120	5,513	2,330	12,412	4,620	5,976
Non-operating profit & loss	-18,917	-12,123	-15,386	-6,205	-10,071	-4,782
Ordinary income	15,844	14,997	7,474	10,459	26,511	17,274
Extraordinary profit & loss	-413	-3,219	-3,122	2,852	-4,050	-19,155
Income before taxes on net income	15,431	11,778	4,351	13,312	22,460	-1,881
Taxes on income	7,400	7,057	3,269	4,378	8,244	7,122
Corporation tax adjustment	-	-	-	3,745	4,430	-6,262
Minority interests	-911	-1,033	-243	-348	-1,111	-2,448
Amortization of consolidated adjustment	-262	-252	-	-	-	-
Equity in earnings of affiliates	1,980	1,905	-	-	-	-
Net income	8,838	5,340	838	4,841	8,673	-5,189

4.Profitability(Consolidated)

	96	97	98	99	2000	2001
Ratio of gross profit / Net Sales (%)	12.8	12.3	12.3	9.9	9.8	8.5
Ratio of operating profit / Net Sales (%)	2.0	1.6	1.6	1.1	2.0	1.2
Ratio of Ordinary Profit/Net sales (%)	0.9	0.9	0.5	0.7	1.4	1.0
Ratio of net income / Net Sales (%)	0.5	0.3	0.1	0.3	0.5	-

Increase and decrease rate (From last year)

	96	97	98	99	2000	2001
Net sales (%)	11.1	-2.8	-14.1	9.8	16.5	-1.7
Gross profit (%)	7.7	-6.4	-14.1	-11.8	15.3	-14.7
Operating income (%)	15.4	-22.0	-15.7	-27.1	119.5	-39.7
Ordinary income (%)	18.3	-5.3	-50.2	39.9	153.5	-34.8
Net income (%)	35.1	-39.6	-84.3	477.3	79.2	-

	96	97	98	99	2000	2001
SG&A expenses ratio(%)	10.8	10.7	10.7	8.9	7.8	7.3
Interest coverage (Times)	1.8	1.5	1.4	1.0	2.1	1.6
R O A (%)	0.7	0.4	0.1	0.4	0.7	-
R O E (%)	4.7	2.8	0.4	2.7	4.8	-

5.Capital Expenditures(Consolidated)

(Hundred millions Yen) *2002(expectation)

	96	97	98	99	2000	2001	*2002
Capital expenditures (*1)	297	351	275	226	171	255	325
Depreciation and amortization (*2)	375	365	240	234	247	234	236
Net income	88	53	8	48	86	-51	
Cash dividends paid and bonuses to Directors	52	51	51	38	38	38	
Simplified Cash Flows	411	367	197	244	295	145	

Notes:

*1. Capital expenditures shown above mainly involve investments in plants and other fixed assets and are reported on an actual work basis.

Since FY2001, this item has been reported to include intangible fixed asset and long-term prepaid expense investments.

*2. Deprecation expenses above include the write-off of intangible fixed assets and long-term prepaid expenses.

6. Balance Sheets (Consolidated)

(Million Yen)

			96	97	98	99	2000	2001
ASSETS	Current assets	Cash & cash equivalents	52,302	52,033	37,354	50,854	54,156	65,309
		Accounts receivable & Notes	211,298	193,049	187,830	216,059	248,325	194,278
		Marketable securities	62,490	96,813	96,870	97,285	35,817	11,624
		Inventories	168,074	148,189	135,200	163,502	190,186	179,670
		Deferred Tax Assets	-	-	-	3,941	3,478	3,224
		Accrued income	41,200	35,809	39,378	65,548	70,274	64,090
		Other	23,367	23,291	17,482	18,934	29,545	17,464
		Allowance for doubtful accounts	-1,737	-1,779	-1,278	-1,134	-834	-539
		TOTAL	556,994	547,408	512,838	614,991	630,950	535,124
	Fixed assets	Property, plant & equipment	609,087	603,101	591,950	540,069	535,120	566,176
		Intangible fixed assets	2,908	2,399	2,457	6,970	6,983	8,145
		Investments & Other assets	118,394	125,945	122,953	132,621	146,434	134,258
		Deferred Tax Assets	-	-	-	2,992	3,105	3,091
		Allowance for doubtful accounts	-977	-2,350	-1,330	-2,803	-2,633	-4,625
		TOTAL	729,412	729,095	716,031	679,850	689,009	707,046
		Foreign currency translation adjustment	765	517	414	849	-	-
	TOTAL ASSETS		1,287,171	1,277,021	1,229,285	1,295,692	1,319,959	1,242,171
LIABILITIES	Current liabilities	Account payable & Notes	181,255	133,307	125,995	183,750	228,563	197,864
		Short-term loans	285,186	240,044	229,460	245,108	237,066	205,375
		Bonds redeemable within one year	28,895	-	38,816	44,535	-	10,000
		Commercial paper	-	27,600	10,000	-	-	-
		Deferred Tax Liabilities	-	-	-	-	10	-
		Accrued Expenses	133,259	169,120	163,146	125,021	176,083	182,754
		Other	62,699	66,006	46,657	60,551	60,832	39,360
		TOTAL	691,295	636,079	614,076	658,966	702,556	635,358
	Long-term liabilities	Bonds, Other	117,798	161,274	113,013	119,867	129,867	108,208
		Long-term debt	222,353	223,851	250,271	278,052	243,751	225,069
		Deferred Tax Liabilities	-	-	-	3,490	11,104	21,166
		Retirement & severance payroll	2,332	2,391	2,465	3,967	-	-
		Retirement & severance benefits	-	-	-	-	3,611	4,042
		Other	38,948	38,180	39,047	29,499	30,052	30,626
		TOTAL	381,432	425,697	404,798	434,877	418,387	389,114
	TOTAL LIABILITIES		1,097,382	1,086,306	1,018,874	1,093,844	1,120,943	1,024,473
		Minority interests	24,654	24,529	23,914	21,461	21,242	23,394
EQUITY	Common stock		51,886	51,886	51,886	51,886	51,886	51,886
	Additional paid capital		34,092	34,092	34,092	34,092	34,092	34,092
	Legal reserve		5,432	5,947	-	-	-	-
	Retained earnings		98,377	98,788	-	-	-	-
	Revaluation Excess		-	-	-	-	-	12,066
	Consolidated surplus		-	-	100,517	94,883	92,847	95,224
	Foreign Currency translation adjustments		-	-	-	-	-693	-508
	Other marketable securities valuation gains or losses		-	-	-	-	-	2,060
	Treasury stock, other		-	-	-	-476	-0	-2
	Cosmo Oil's stock owned subsidiaries		-	-	-	-	-360	-517
		TOTAL EQUITY		189,789	190,715	186,496	180,386	177,773
	TOTAL LIABILITY & EQUITY		1,287,171	1,277,021	1,229,285	1,295,692	1,319,959	1,242,171

7. Financial Statements (Consolidated)

Interest-Bearing Debt

(Hundred millions Yen)

	96	97	98	99	2000	2001
Interest-Bearing Debt	6,542	6,528	6,415	6,875	6,106	5,486

(%)

	96	97	98	99	2000	2001
Interest-bearing debt ratio (%)	50.8	51.1	52.2	53.1	46.3	44.2
Shareholder's equity ratio (%)	14.7	14.9	15.2	13.9	13.5	15.6

8. Stock Information (Consolidated)

	96	97	98	99	2000	2001
Net income per share (Yen)	14.0	8.5	1.3	7.8	13.8	-8.2
Shareholder's equity per share (Yen)	274.1	202.2	295.2	286.8	282.1	308.7
Cash dividend per share (Yen)	8.0	8.0	6.0	6.0	6.0	6.0
P E R (Times)	35.7	30.1	160.2	17.8	16.3	-
P B R (Times)	1.7	1.3	0.7	0.5	0.8	0.7

9- .Statement of Cash Flows (Consolidated)

(Million Yen)

	Fiscal Year 2000 (Apr/1/2000 to Mar/31/2001)	Fiscal Year 2001 (Apr/1/2001 to Mar/31/2002)
Cash Flows from Operating Activities		
Net Income before Income Taxes	22,460	1,881
Depreciation	24,671	23,492
Interest Paid	18,691	14,219
Interest Income and Dividends Receivable	3,445	3,192
Increase (Decrease) in Accounts Receivable	31,786	62,189
Increase(Decrease) in Inventories	26,548	10,622
Increase(Decrease) in Accounts Payable	44,934	16,146
Increase in Other Asset	16,733	173
Increase(Decrease) in other liabilities	50,146	8,152
Other	623	15,844
Sub total	83,015	96,821
Interest Income and Dividends Received	2,743	1,820
Interest Paid	18,514	14,259
Income Taxes Paid	8,419	7,736
Total	58,824	76,645

9- .Statement of Cash Flows (Consolidated)

(Million Yen)

	Fiscal Year 2000 (Apr/1/2000 to Mar/31/2001)	Fiscal Year 2001 (Apr/1/2000 to Mar/31/2002)
. Cash Flows from Investment Activities		
Payments for Acquisitions of Property, Plant and Equipment	21,549	25,627
Proceeds from Sale of Property, Plant and Equipment	56,053	9,044
Increase Provided by Acquisition and Sale of Securities	-	424
Payments for Acquisition of Investment Securities	7,036	13,403
Proceeds from Sale of Investment Securities	7,335	17,923
Other	7,455	1,456
Total	27,347	13,944
. Cash Flows from Financing Activities		
Net decrease (increase) in short-term loans	16,626	66,298
Proceeds from long-term loans	4,905	30,430
Repayment of long-term loans	36,946	37,461
Revenues from Issuance of bond	10,000	-
Payments for Redemption of bond and convertible bond	44,584	11,531
Payments of Dividends	4,290	4,188
Other	314	504
Total	87,229	88,545
. Difference in Value As Effect of Exchange Rate Changes on Cash and Cash Equivalents	587	1,078
.Decrease in Cash and Cash Equivalents	469	24,766
.Cash and Cash Equivalents at Beginning of Year	96,013	97,787
. Increase in Cash and Cash Equivalents Resulting from New Consolidation	1,514	934
.Increase of cash and cash-equivalents due to mergers	729	44
.Cash and Cash Equivalents at End of Year	97,787	73,999

Nonconsolidated Information

10. Income Statements (Nonconsolidated)

(Million Yen)

	96	97	98	99	2000	2001
Net sales	1,562,928	1,511,551	1,323,647	1,410,875	1,605,883	1,563,443
Cost of sales	1,390,186	1,351,427	1,185,757	1,304,054	1,485,931	1,466,261
Gross profit	172,741	160,124	137,890	106,820	119,951	97,181
SG&A expenses	150,852	146,231	121,259	104,906	96,558	90,568
Operating income	21,889	13,892	16,631	1,914	23,393	6,613
Non-operating profit & loss	-10,757	-3,674	-8,667	3,909	-10,487	-2,568
Interest & dividend income	7,344	8,982	5,590	7,660	4,154	6,188
Interest expense	20,266	18,788	17,587	17,744	17,262	13,190
Foreign exchange gain	-3,365	441	2,655	3,764	802	1,166
Other	5,530	5,690	675	10,228	1,818	3,266
Ordinary income	11,132	10,218	7,964	5,823	12,906	4,044
Extraordinary profit & loss	-1,226	-2,100	360	385	-4,157	-20,683
Income before taxes on income	9,905	8,117	8,325	6,208	8,748	-16,638
Taxes on income	2,660	3,010	990	50	50	67
Refunded corporation tax	-	-	-	-480	-	-73
Prior-year Income Taxes	-	-	-	-	-	325
Corporation tax adjustment	-	-	-	2,782	3,475	-7,172
Net income	7,245	5,107	7,335	3,855	5,223	-9,785

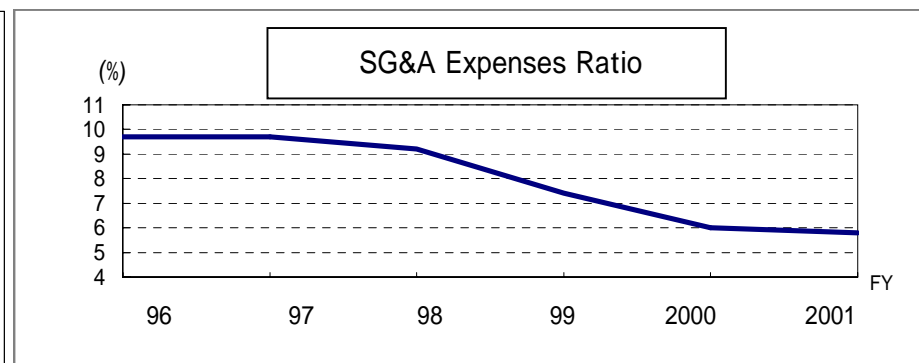
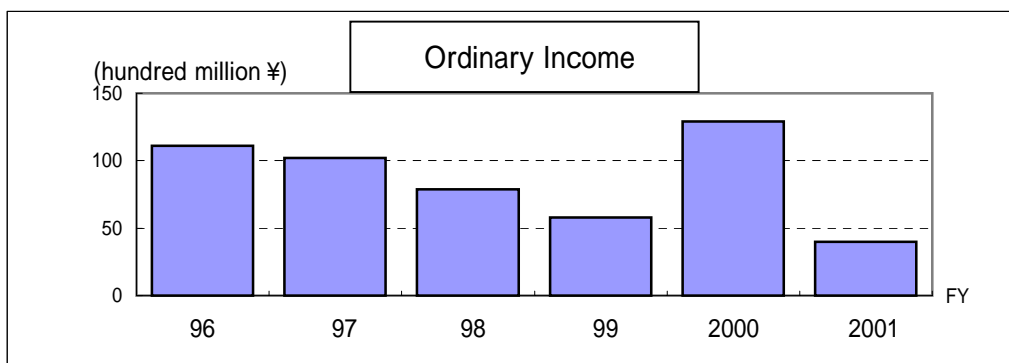
11. Profitability (Nonconsolidated)

	96	97	98	99	2000	2001
Ratio of gross profit / net sales (%)	11.1	10.6	10.4	7.6	7.5	6.2
Ratio of operating profit / net sales (%)	1.4	0.9	1.3	0.1	1.5	0.4
Ratio of Ordinary profit/net sales (%)	0.7	0.7	0.6	0.4	0.8	0.3
Ratio of net income / net sales (%)	0.5	0.3	0.6	0.3	0.3	-

Increase and decrease rate (From last year)

	96	97	98	99	2000	2001
Net sales (%)	12.1	-3.3	-12.4	6.6	13.8	-2.6
Gross profit (%)	1.4	-7.3	-13.9	-22.5	12.3	-19.0
Operating income (%)	8.6	-36.5	19.7	-88.5	1122.2	-71.7
Ordinary income (%)	-6.5	-8.2	-22.1	-26.9	121.6	-68.7
Net income (%)	39.0	-29.5	43.6	-47.4	35.5	-

	96	97	98	99	2000	2001
SG&A expenses ratio (%)	9.7	9.7	9.2	7.4	6.0	5.8
Interest coverage (Times)	1.4	1.2	1.3	0.5	1.6	0.6
ROA (%)	0.6	0.4	0.7	0.3	0.4	-
ROE (%)	4.2	3.0	4.2	2.2	3.1	-



12.Capital Expenditures (Nonconsolidated)

(Hundred millions Yen) *2002(expectation)

	96	97	98	99	2000	2001	*2002
Capital expenditures (*1)	242	242	197	375	102	212	249
Depreciation and amortization (*2)	307	289	172	179	189	184	179
Net Income	72	51	73	38	52	-97	
Cash dividends paid and bonuses to Directors	51	51	51	38	38	38	
Simplified Cash Flows	328	289	194	179	203	50	

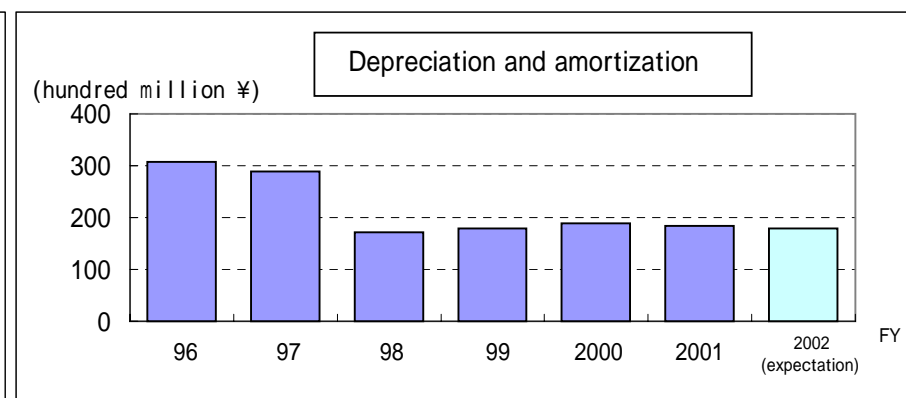
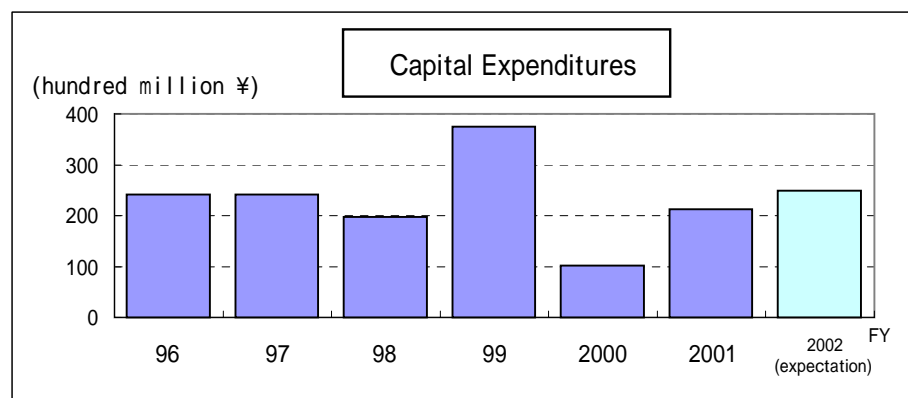
Notes:

*1. Capital expenditures shown above mainly involve investments in plants and other fixed assets and are reported on an actual work basis.

Since FY2001, this item has been reported to include intangible fixed asset and long-term prepaid expense investments.

*2. Depreciation expenses above include the write-off of intangible fixed assets and long-term prepaid expenses.

Number of Service stations	7,048	6,786	6,481	6,105	5,779	5,541
Number of Oil storage depot Facilities	61	57	52	45	41	39



13. Balance Sheets (Nonconsolidated)

(Million Yen)

			96	97	98	99	2000	2001
ASSETS	Current assets	Cash & cash equivalents	34,370	40,249	27,384	34,072	35,412	44,443
		Notes / Accounts receivable	168,180	156,264	158,056	168,048	198,725	150,332
		Marketable securities	47,922	82,770	85,011	84,553	27,817	11
		Inventories	143,190	126,556	119,336	139,414	166,677	157,087
		Short-term loans	32,890	35,425	61,892	15,179	25,048	-
		Accrued income	78,532	51,328	45,297	86,134	87,732	74,186
		Deferred Tax Assets	-	-	-	2,684	1,966	1,808
		Other	7,555	7,087	5,793	6,736	9,929	34,766
	Allowance for doubtful accounts	-1,919	-1,692	-1,227	-826	-407	-346	
	TOTAL	510,723	497,992	501,546	535,998	552,902	462,290	
	Fixed assets	Property, plant & equipment	434,950	428,202	419,351	485,444	474,420	477,792
		Intangible fixed assets	1,864	1,652	1,598	5,400	4,492	4,970
		Investments & Other assets	204,368	221,422	200,520	157,233	171,753	157,934
		Allowance for doubtful accounts	-951	-1,513	-1,242	-1,911	-2,220	-2,714
		Investment Valuation Allowance	-	-	-	-3,520	-3,520	-7,490
TOTAL		640,232	649,764	620,227	642,646	644,925	630,493	
TOTAL ASSETS			1,150,956	1,147,757	1,121,774	1,178,644	1,197,828	1,092,784
LIABILITIES	Current liabilities	Account payable and Notes	163,135	118,724	112,973	157,028	201,025	183,674
		Short-term loans	245,611	205,448	197,859	199,215	182,819	148,884
		Bonds redeemable within one year	28,895	0	38,816	44,535	-	10,000
		Commercial paper	0	27,600	10,000	-	-	-
		Accrued Expenses	127,913	163,722	160,788	118,230	167,689	182,232
		Other	53,588	53,037	41,928	63,108	71,803	35,219
		TOTAL	619,145	568,533	562,365	582,118	623,337	560,012
		Long-term liabilities	Bonds, Convertible bonds	117,798	161,274	113,013	119,867	129,867
	Long-term debt		205,844	210,770	238,862	270,611	235,411	217,907
	Deferred Tax Liabilities		-	-	-	10,981	13,739	7,428
	Deferred Tax Liabilities Related to Revaluation		-	-	-	-	-	6,275
	Retirement & severance benefits		1,098	1,292	1,530	1,085	-	-
	Other		33,946	32,794	30,689	24,115	24,174	24,677
	TOTAL		358,687	406,131	384,095	426,661	403,192	364,498
	TOTAL LIABILITIES			977,833	974,664	946,460	1,008,779	1,026,530
EQUITY	Common stock	51,886	51,886	51,886	51,886	51,886	51,886	
	Additional paid capital	34,092	34,092	34,092	34,092	34,092	34,092	
	Legal reserve	5,432	5,947	6,458	6,838	7,217	7,407	
	Revaluation Excess	-	-	-	-	-	9,078	
	Retained earnings	81,711	81,165	82,875	77,047	78,100	64,332	
	Other marketable securities valuation gains or losses	-	-	-	-	-	1,475	
	TOTAL EQUITY	173,123	173,092	175,314	169,864	171,297	168,274	
TOTAL LIABILITY & EQUITY			1,150,956	1,147,757	1,121,774	1,178,644	1,197,828	1,092,784

14- .Financial Statements
(Nonconsolidated)

Equity Finance (Mar 31,2002)

(Million Yen)

	Date of issue	Conversion price	Coupon	Conversion ratio	Mar 31, 2001	Mar 31, 2002	Due date
Convertible bond Third	03/17/1994	877	1.1%	0.0%	19,867	18,508	03/30/2005

* Rating

B B B+ / Japan Credit Rating Agency (JCR) / B B B / Rating & Investment Information Center (R&I)

Straight bond (Sep 30,2001)

(Million Yen)

	Date of issue	Mar 31, 2001	Mar 31, 2002	Interest rate	Due date	Rating
Unsecured bond	First	1997/06/25	15,000	2.80%	2003/06/25	B B B+ Japan Credit Rating Agency (JCR)
	Second	1997/06/25	10,000	3.30%	2007/06/25	
	Third	1997/08/08	10,000	3.15%	2007/08/08	
	Fourth	1997/08/08	10,000	2.30%	2002/08/08	
	5	1999/09/08	5,000	2.72%	2003/09/08	B B B Rating & Investment Information Center (R&I)
	6	1999/09/08	5,000	3.08%	2004/09/08	
	7	1999/09/20	5,000	3.50%	2005/09/20	
	8	1999/11/18	5,000	3.10%	2005/11/18	
	9	1999/11/25	5,000	2.34%	2003/11/25	
	10	1999/11/25	5,000	2.70%	2004/11/25	
	11	2000/02/16	5,000	3.00%	2006/02/16	
	12	2000/02/25	5,000	2.45%	2004/02/25	
	13	2000/02/25	5,000	2.83%	2005/02/25	
	14	2000/03/07	5,000	3.05%	2006/03/07	
	15	2000/03/28	5,000	2.86%	2005/03/28	
	16	2000/05/19	5,000	2.50%	2004/05/19	
	17	2000/05/24	5,000	2.84%	2005/05/24	

14- . Financial Statements
(Nonconsolidated)

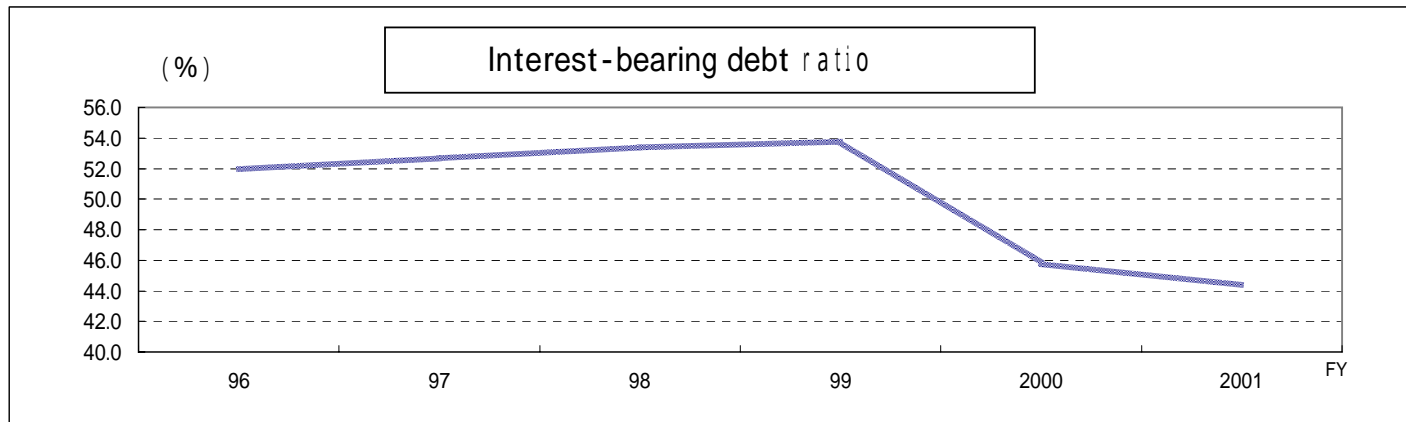
Interest-Bearing Debt

(Hundred Million Yen)

	96	97	98	99	2000	2001
Interest-Bearing Debt	5,981	6,050	5,985	6,342	5,480	4,850

(%)

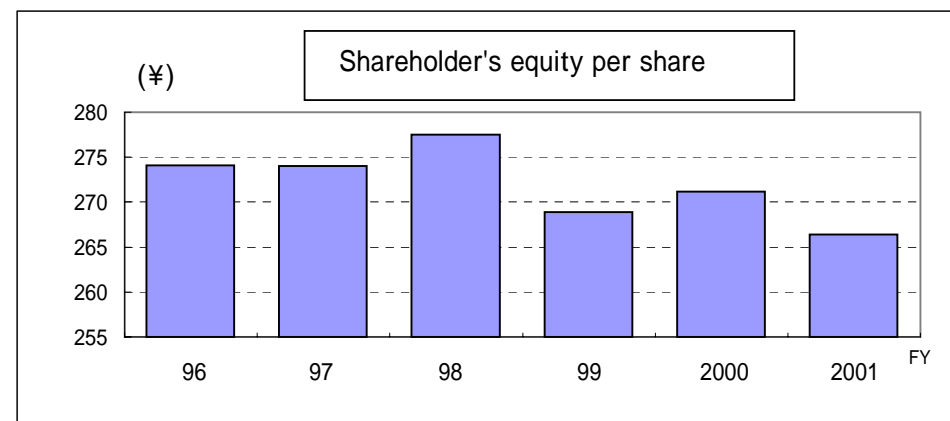
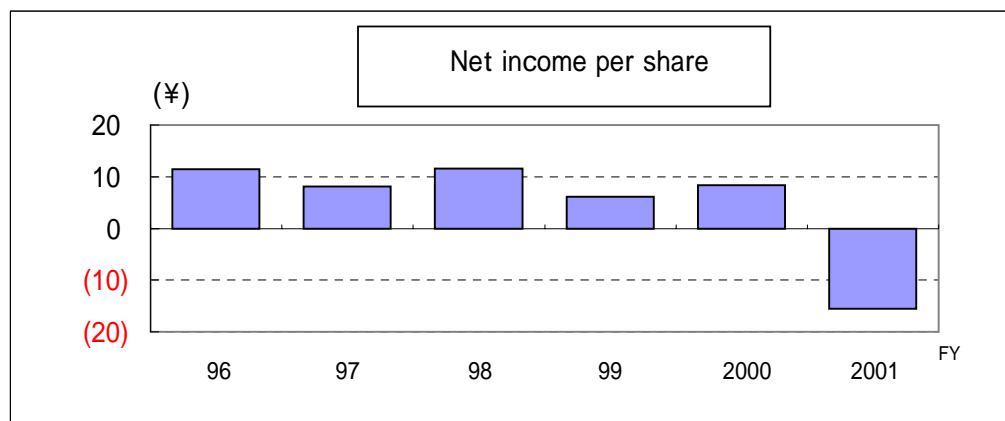
	96	97	98	99	2000	2001
Interest-bearing debt ratio	52.0	52.7	53.4	53.8	45.8	44.4
Fixed assets to long-term capital ratio	120.4	112.2	110.9	107.7	112.3	118.3
Shareholder's equity ratio	15.0	15.1	15.6	14.4	14.3	15.4



15. Stock Information

(Nonconsolidated)

	96	97	98	99	2000	2001		
Price range Closing price(Year end) (Yen)	499	254	213	138	223	219		
Net income per share (Yen)	11.5	8.1	11.6	6.1	8.3	-15.5		
Shareholder's equity per share (Yen)	274.1	274.0	277.5	268.9	271.2	266.4		
Simplified Cash Flows per share (Yen)	51.9	45.7	30.7	28.3	32.1	7.9		
Cash dividend per share (Yen)	8.0	8.0	6.0	6.0	6.0	6.0		
Dividend Payout(%)	69.8	99.0	51.7	98.3	72.6	-		
PER (Times)	43.4	41.6	18.4	22.6	26.9	-		
PBR (Times)	1.8	0.9	0.8	0.5	0.8	0.8		
Price Simplified Cash Flows ratio(Times)	9.6	5.6	7.0	4.9	7.0	27.7		
Stock Price (Yen)	Apr-Sep	High	732	602	275	272	225	394
		Low	605	280	168	165	122	214
	Oct-Mar	High	635	330	213	234	274	293
		Low	402	166	159	118	188	147
Number of shareholders (Million)	632	632	632	632	632	632		
Total market value(Hundred Millions Yen)	3,152	1,605	1,346	872	1,408	1,383		



16. Productivity (Nonconsolidated)

(Million Yen)

	96	97	98	99	2000	2001
Total number of employees	3,395	3,109	2,677	2,048	1,970	1,892
Net sales per employees	460	486	494	688	815	826
Net income per employees	2.1	1.6	2.7	1.9	2.7	-

